



LAMSADE
UMR CNRS 7243
laboratoire d'analyse et modélisation de systèmes pour l'aide à la décision



policy analytics
[GDR 3720]
aide à la décision dans la conception, la mise en œuvre et l'évaluation des politiques publiques



Australian
National
University



Institut national de recherche
en sciences et technologies
pour l'environnement et l'agriculture



2nd FRENCH-AUSTRALIAN FORUM ON POLICY ANALYTICS: Recoupling knowledge, values and process for improved public policy in the 21st century



6-7 June 2019, 9.30am-5pm

**ANU Centre for European Studies
The Australian National University
1 Liversidge St, Acton Canberra, Australia**

Europa Policy Lab, 6 June



Co-funded by the
Erasmus+ Programme
of the European Union

French-Australian Forum on Policy Analytics: Background

Complex global challenges in uncertain times demand innovative approaches and methods for supporting public policy. Traditional technocratic and evidence-based ideals of policy making are being superseded due to rapid changes in technologies, societal values and a globally connected environment where information can be sourced almost instantaneously often with minimal quality control by individuals and groups seeking to influence decision-making processes.

In such times, termed by some as the 'Fourth Industrial Revolution', higher-order research skills including creativity and analytic capacities to manage multiple types of knowledge, values, qualities of data, and new technological constellations including artificial intelligence, are needed to improve public policy and ensure sustainable development for all. This is the purpose of "policy analytics" and the multiple roles researchers and other practitioners can play in supporting more effective public policy processes, including innovative personalised or community-focussed policy designs that result in greater positive outcomes for societies and the environment.

"Business analytics" has been thriving as a research topic and profession for many years to support improved competition, customer service and profit for businesses. However, the use of "policy analytics" to support public decision-making processes has remained underdeveloped, despite the recent explosion of data science teams and roles in public service agencies. Policy analytics has recently emerged as a new paradigm and topic for research for considering and fostering new research-policy-society relations. Specifically, the growth in the topic has been supported through a European COST Action, which involved substantial international cooperation outside of Europe, and the French CNRS interdisciplinary research network (GDR) program on Policy Analytics. This French-Australian forum, also supported by a EU Erasmus+ Jean Monnet project of Europa Policy Labs, seeks to further internationalise this work and thinking.

Although all areas of public policy can benefit from the development of targeted policy analytics, global changes such as climate change, technological transformations, population growth and movement, mean that issues of sustainable development, conflict over resources and security are at the forefront of public policy work that could have substantial impact on the world, and will receive targeted treatment in this forum.

This two-day forum is intended to showcase and extend recent thinking around and applications of policy analytics, as well as to develop discussion, interaction and international collaboration opportunities, which will be deepened through subsequent joint research work and projects.

French-Australian Forum on Policy Analytics

Day 1: Thursday 6th June 2018, 9.00am – 5.00pm
Jean Monnet supported Europa Policy Lab



Co-funded by the
Erasmus+ Programme
of the European Union

Identifying the key questions for advancing policy analytics research and practice

Location: Centre for European Studies, Australian National University, Building 67,
1 Liversidge St, Acton ACT 2601

9.00am	Welcome Tea & Coffee
--------	----------------------

Welcomes and introductions

9.30am	<p>Jacqueline Lo, Chair, ANU Academic Board and Director, ANU Centre for European Studies</p> <p>Bertrand Pous, Counsellor (Cooperation and Cultural Action), Embassy of France in Australia</p> <p>Genevieve Bell, Distinguished Professor and Director, Autonomy, Agency and Assurance (3A) Institute, College of Engineering and Computer Science, ANU</p> <p>Sarah Pearson, Chief Innovation Officer & Chief Scientist, InnovationXchange, Department of Foreign Affairs and Trade, Australian Government</p> <p>Katherine Daniell, 3A Institute & Fenner School, ANU <i>Scene-setting on policy analytics research and practice</i></p>
--------	---

Provocation panel 1: Human interfaces with autonomous systems

Chair: Katherine Daniell, ANU

10:00	<p>Alexis Tsoukias, LAMSADE, PSL Research University</p> <p>Liz Williams, 3A Institute, ANU</p> <p>Noel Derwort, 3A Institute, ANU & PSL Research University</p> <p>Lin Hatfield Dodds, Associate Dean, ANZSOG</p> <p>Megan Bunfield, National Manager Online Services, Department of Human Services, Australian Government</p>
-------	--

11:15	Morning tea
-------	-------------

Provocation panel 2: Community-focussed analytics for conflict identification & management

Chair: Myriam Merad, CNRS

11.45am	Clarke Jones , Research School of Psychology Anouck Adrot , Université Paris Dauphine / PSL Research University Robert Ackland , Research School of Sociology, ANU Mathieu O’Neil , Research School of Sociology, ANU / UC David Wainwright , Recently transitioned from the Australian Army
---------	---

1:00pm	Lunch
--------	-------

Provocation panel 3: Scaling up decision support through data and knowledge integration

Chair: Joseph Guillaume, Fenner School, ANU

2.00pm	Tony Jakeman , Fenner School, ANU Kylie Galway , Director Decision Support and Analysis, ERIN, Department of the Environment and Energy, Australian Government Emma Burns , Centre for Entrepreneurial Agri-Technology Bruce Doran , Fenner School, ANU Marta Yebra , Fenner School, ANU Ehsan Nabavi , 3A Institute, ANU
--------	--

3.15pm	Afternoon tea
--------	---------------

Provocation panel 4: Policy analytics: developing effective and reflexive practitioners?

Chair: Lorrae Van Kerkhoff, Fenner School, ANU

3.45pm	Nils Ferrand , IRSTEA Delia Pembrey , Augmented Intelligence Centre of Excellence, Department of Human Services, Australian Government Guy Leedon , Research School of Management Sciences, ANU Fateme Zare , Fenner School, ANU Sean Innis , Public Policy and Societal Impact Hub, ANU
--------	---

5:00pm	Day 1 Close
--------	--------------------

6.30pm	Dinner at Boffin’s Restaurant at University House
--------	---

French-Australian Forum on Policy Analytics

Day 2: Friday 7th June 2019, 9.00am – 5.00pm

Visions for policy analytics research and practice: Interactive workshop

Location: Centre for European Studies, Australian National University, Building 67, 1 Liversidge St, Acton ACT 2601

9.00am	Welcome Tea & Coffee
--------	----------------------

9.30am	Day 1 review – Panel Chairs
--------	------------------------------------

- Key points from day 1 and questions of interest
- Objectives for the end of the day

Future uses of analytics in policy?

9.50am	Envisioning the future of policy analytics in 2030
--------	--

11.15am	Morning tea
---------	-------------

Developing future collaborative initiatives

11.45am	Developing ideas and small group discussion
---------	---

1.00pm	Lunch
--------	-------

Action planning

2.00pm	Small group discussion of identified opportunities
--------	--

3.15pm	Afternoon tea
--------	---------------

Group feedback and discussion

3.45pm	Review of goals of initiatives and next steps
--------	---

5.00pm	Day 2 Summary and Close
--------	--------------------------------

5.30pm	Informal drinks at University House
--------	-------------------------------------

French-Australian Forum on Policy Analytics

Speaker, Chair & Organiser Biographies



Dr Robert Ackland

Robert Ackland leads the Virtual Observatory for the Study of Online Networks (VOSON) Lab (<http://vosonlab.net>) at the School of Sociology, Australian National University. With a background in economics, Robert works in the areas of network science and computational social science, with particular focus on online social and organisational networks.



Assoc. Prof. Anouck Adrot, Paris-Dauphine University PSL

Anouck Adrot is an Associate Professor at Paris-Dauphine University PSL, affiliated to the Dauphine Recherches en Management (DRM) research center, and currently honorary visiting scholar at RMIT. She holds a dual-degree PhD from Georgia State University and Paris-Dauphine University. Her research interests cover collective behaviors, emergence and information transmission emergence in demanding settings. She has a particular interest into how emergent initiatives as well as digital transformation can challenge organizations and institutions in critical situations.



Distinguished Professor Genevieve Bell

Genevieve is the Director of the 3A Institute (3Ai), Florence Violet McKenzie Chair, and a Distinguished Professor at the Australian National University (ANU) as well as a Vice President and Senior Fellow at Intel Corporation. She is a cultural anthropologist, technologist and futurist best known for her work at the intersection of cultural practice and technology development. Genevieve joined the ANU College of Engineering and Computer Science in February 2017, after having spent the past 18 years in Silicon Valley helping guide Intel's product development by developing the company's social science and design research capabilities. Genevieve established the 3A Institute in September 2017 at the ANU in collaboration with CSIRO's Data61, with the mission of building a new applied science around the management of artificial intelligence, data, technology and their impact on humanity. The 3Ai is leading the discussion around the future of artificial intelligence (AI) the launch of the world's first applied science in February 2019. This applied science is focusing on a set of critical questions around autonomy, agency and assurance and how to manage a world of AI, data, technology and its impact on humanity. Genevieve is the inaugural appointee to the Florence Violet McKenzie Chair at the ANU, named in honour Australia's first female electrical engineer, which promotes the inclusive use of technology in society. She also presented the highly acclaimed ABC Boyer Lectures for 2017, in which she investigated what it means to be human, and Australian, in a digital world. In 2018, Bell was appointed Non-Executive

Director of the Commonwealth Bank of Australia Board, she became a member of the Prime Minister's National Science and Technology Council, and a Fellow of the Australian Academy of Technology and Engineering (ATSE). Genevieve completed her PhD in cultural anthropology at Stanford University in 1998.



Megan Bunfield, National Manager, Online Services and the Augmented Intelligence Centre of Excellence, Canberra Delivery Centre, CIO Group, Department of Human Services

As the Department of Human Services' National Manager, Online Services Branch and Augmented Intelligence Centre of Excellence for Government, Megan leads a dynamic and diverse multi-cultural team of 370 people to provide online services to 99.9% of Australians. Megan is a key contributor to the ongoing digital transformation of the Department of Human Services' and whole-of-government service delivery, including the development and deployment of AI solutions, such as the Digital Assistants, Sam and Oliver. In a fast-moving and innovative Public Sector digital transformation environment, the last 15 years include implementing strategic public sector Vendor Frameworks, technical and operational management of platforms and service channels, Aged Care Redevelopment and Government Platform as a Service (PaaS).

Passionate about people and the potential for technology to benefit humanity, Megan's latest endeavour is establishing the DHS Augmented Intelligence Centre of Excellence for Government. The emergence of AI and machine learning provides significant benefits as well as systemic risks, revealing a multiplex of issues. To work with the complexities of this new environment, the Centre develops whole-of-government dialogue around key issues of Ethics and Artificial Intelligence, the future of work, business processes and the modern workplace, women in the workplace and keeping the human experience in mind when developing and integrating future technology for public service.



Dr Emma Burns

Dr Emma Burns is the Senior Project Manager for the new joint ANU and CSIRO Centre for Entrepreneurial Agri-Technology. Prior to joining the Research School of Biology, Emma was based within the ANU Fenner School of Environment and Society, where she held positions as the Director of Sustainable Farms (2017-2018) and Executive Director of the Long Term Ecological Research Network (2011-2018). Emma holds a PhD in population genetics and phylogeography. She is a member of the Editorial Board for the Sustainable Intensification & Ecosystem Services section for the journal *Frontiers in Sustainable Food Systems*. She was a foundational member of the Australian Ecosystem Science Council (2014-2018). Prior to joining ANU, Emma held positions in consulting, and government (NSW and Commonwealth). Most notably, she was a member of the leadership team which established the Commonwealth Government's Environment Stewardship Program between 2007 and 2011. Emma has published in excess of 40 articles on diverse topics in agri-environmental policy, ecological research, and natural resource

management. She is committed to bridging the divide between science, policy, industry, and practice and is inspired most by Buckminster Fuller's quote "You never change things by fighting the existing reality. To change something, build a new model that makes the existing model obsolete".



Assoc. Prof. Katherine Daniell

Katherine Daniell is Research Lead at the 3A Institute: the Australian National University's first innovation institute with the mission of building a new applied science to 'manage the machines'. She is also an Associate Professor at the ANU's Fenner School of Environment and Society. Katherine's work focusses on the challenges of implementing collaborative approaches to policy and action for sustainable development. Trained in engineering, arts and public policy, her work now bridges multiple domains including governance, risk management, politics and cultures of innovation, and international science and technology cooperation. Katherine has published over 100 academic works including the recent ANZSOG ANU Press book "Multi-Level Governance: conceptual challenges and case studies from Australia" (2017). She has previously worked in the ANU Centre for European Studies, HC Coombs Policy Forum, ANU Centre for Policy Innovation and IRSTEA in France. Katherine completed a co-tutelle PhD at AgroParisTech in France and ANU under a John Monash Scholarship. She serves in multiple external roles including as Director and Board member of the Peter Cullen Water and Environment Trust, a Member of Australia's National Committee on Water Engineering, and President of the Australian-French Association for Research and Innovation (AFRAN) Inc.



Mr Noel Derwort

Noel Derwort is a PhD candidate with the 3A Institute at The Australian National University. He is a retired Air Force Pilot and Senior Officer (Air Commodore) with significant experience in the Joint Operations, Command and Control, Leadership and Military Aviation fields. Currently residing in France as a visiting researcher at Université de Recherche Paris Sciences et Lettres/PSL Research University, he is interested in the future organisation and command of defence forces in the face of changes brought about by autonomous systems and artificial intelligence. His current focus is on the interfaces between humans and automated processes in cyber-physical systems, and what lessons we can draw together from different disciplines--including the management and computer engineering sciences--for improving their design, management and regulation.



Dr Bruce Doran

Most of Bruce's research is focused on social applications of GIS, particularly in the areas of (a) the impact of commercial gambling at a community level, (b) mapping fear of crime and (c) developing mapping approaches for Native Title decision making. At the moment, he is working with colleagues from Southern Cross University (Associate Professor Martin Young) and Fenner School PhD student (Francis Markham) on an NT Government Funded research project entitled "Mapping Problem Gambling in the Northern Territory". Despite remote areas being well provisioned with Electronic Gaming Machines (EGMs), and the fact that pubs and clubs are important foci for outback towns, the impact of EGMs in remote areas is very poorly understood. The primary aim of the project is to examine the relationships between poker machine venues, the communities that support them and levels of associated social harm across northern Australia. Bruce has an ongoing partnership with the Yawuru people, the traditional owners of country in and around Broome, Western Australia. The partnership focuses on developing practical uses of GIS to support Native Title decision making. In 2016, Dean Mathews (Fenner School visiting fellow and Yawuru man) and Bruce were given the ANU Vice Chancellor's award for Indigenous Education.



Dr Nils Ferrand, UMR G-EAU, IRSTEA

Dr Nils Ferrand is a senior researcher at IRSTEA, the French National Research Institute for Science and Technology for Environment and Agriculture, within the Water Management, Actors & Uses (G-EAU) joint laboratory in Montpellier, France. He has a background in participatory modelling of socio-environmental systems, decision support, engineering participation, monitoring and evaluation, policy integration and international project development. He leads the CoOPLAaGE program, a methodological apparatus supporting multi-level governance and management, between communities and policy makers.



Dr Kylie Galway

Kylie has more than 20 years experience in environmental strategic policy and planning. Commencing at CSIRO, Kylie has spent most of her career with the Queensland Government. She has just recently joined the Australian Government as Director for Decision Support and Analysis in the Department of Environment and Energy. Kylie has moved from strategic policy and planning into the world of data analytics to help improve the data capabilities of environmental decision makers.



Dr Joseph Guillaume

Joseph Guillaume is an ARC DECRA Research Fellow at the Australian National University. He is a transdisciplinary modeller with a particular interest in uncertainty and decision support. Application areas have focussed primarily on water resources, including rainfall-runoff modelling, hydro-economic modelling, ecosystem health, global water scarcity and global food security. Ongoing work involves providing a synthesis of the many ways we communicate about uncertainty, and their implications for modelling and decision support.



Lin Hatfield Dodds

Lin joined the Australian and New Zealand School of Government on secondment from the Department of the Prime Minister and Cabinet in 2019. She is an ANZSOG Associate Dean, leading work across a range of social policy and industry areas. Lin was Deputy Secretary, Social Policy, Department of the Prime Minister and Cabinet from 2016 to 2019. Working across the public service, industry and academia, Lin led the provision of whole of government advice to the Prime Minister on social policy issues including health, education, social services and gender equality. Lin advised the Prime Minister on the Council of Australian Governments. In addition, Lin provided policy advice, and advice on international engagement to the Minister for Women. Prior to this Lin was the National Director of UnitingCare Australia, the national body for Australia's largest non-government network of social, health and aged care services, delivering human services across Australia. Lin has served on a wide range of boards and government advisory bodies, including as President of the Australian Council of Social Service, and Chair of the Australian Social Inclusion Board. Lin participated in the Australian Government Tax Forum in 2011 and the Prime Minister's 2020 Summit in 2007. She has served on numerous advisory committees, including the Australian Government's National Place Based Advisory Group; the Community Response Task Force advising the Deputy Prime Minister during the global financial crisis; and the Aged Care Sector Committee advising the Minister for Health and Aged Care. Lin's background includes working as a counselling psychologist with families and young people at risk, with a particular interest in trauma and abuse. Lin holds a Masters in Applied Psychology from the University of Canberra. She is a member of the Australian Institute of Company Directors. Lin was ACT Australian of the Year in 2008, received a Churchill Fellowship to study anti-poverty strategies in 2003, and was awarded a Chief Minister's International Women's Day Award in 2002.



Sean Innis

Sean Innis is inaugural Director of the Public Policy and Societal Impact Hub at the Australian National University. Sean is a former senior public servant, with more than 25 years public policy experience. He was Special Adviser (akin to Commissioner) to Australia's independent Productivity Commission in 2016 and 2017 and held senior executive positions in the Department of the Prime Minister and Cabinet and the Department of Social Services. Sean chaired the Prime Ministerial Welfare to Work Task Force in 2005 and led the secretariat responsible for the 2004 Energy White Paper - Securing Australia's Energy Future.



Professor Anthony Jakeman

Professor Anthony John Jakeman (*B.Sc., Ph.D., FIEMSS, FMSSANZ, FIMA*) is Professor, Fenner School of Environment and Society, and Director of the Integrated Catchment Assessment and Management Centre, The Australian National University. Interests include integrated assessment methods and decision support systems for water and associated land resource problems, including participatory modelling and management of water supply and quality problems in relation to climate, land use and policy changes and their effects on biophysical and socioeconomic outcomes. Jakeman has undertaken research projects and consultancies for many international organisations, federal, state and local government agencies. He has held visiting positions at Stanford, Cambridge and Lancaster Universities, CSIRO, Cemagref/IRSTEA in France and the US Geological Survey; and is Adjunct Professor at Edith Cowan University.



Dr Clarke Jones

Dr Clarke Jones is a criminologist based at the Research School of Psychology at the Australian National University. He is the founder of the Australian Intervention Support Hub (AISH) based at the ANU School of Regulation and Global Governance. Working closely with the Research School of Psychology, AISH brings together a multi-disciplined group of experts to work with communities, international and domestic governments, and police to develop culturally and religiously appropriate responses to violent extremism and other anti-social youth behaviours. Following his work over 15 years in several areas of national security, including policing, military and intelligence, Dr Jones made the move into academia in 2010 as a visiting research fellow at ANU. Dr Jones' research covers violent, prison radicalisation, community-led intervention, and prison gangs. For the past six years, Dr Jones has also been working as a private consultant, particularly in the area of prison reform. He has just completed a review of Indigenous offender rehabilitation programs in Australia's correctional system and another on prison radicalisation in Australia's correctional systems. He has also been advising the Philippine Government on appropriate management of high-risk offenders, prison gangs and prison reform. In 2002, Dr Jones was the 2002 Chief of the Australian Defence Force Fellow and, based on this fellowship, completed his PhD at the University of New South Wales in 2008. He also holds a master's degree by research in criminology from RMIT University.



Guy Leedon

Guy Leedon is a PhD Candidate in the Research School of Management, where he is interested in the interaction of people and food in the context of social and environmental sustainability. At present, Guy is researching the influence of the idea of terroir on sustainability in the French and Australian wine industries, to inform business and policy decisions. Pre-PhD, Guy worked in digital design, and government and management consulting.



Professor Jacqueline Lo

Professor Jacqueline Lo is serving her second term as Chair of Academic Board. She is also Associate Dean (International) for the ANU College of Arts and Social Sciences and Executive Director of the Centre for European Studies. Jacqueline is an Adjunct Research Fellow of the Centre for Interweaving Performance Cultures at the Free University of Berlin. Her research focuses on issues of race, colonialism, diaspora and the interaction of cultures and communities across ethnic, national and regional borders. Publications include *Staging Nation* (HKUP 2002), *Performance and Cosmopolitics* (Palgrave Macmillan 2007, with Helen Gilbert). She has published extensively in areas of cross-cultural engagement and cultural studies in Europe, North America, Asia and Australia. Jacqueline has considerable experience in academic governance and management, and is an active contributor to discussions within the university-sector. She is also highly experienced in education and cultural policy and cultural diplomacy. She recently served on the committee for reviewing the ACT Arts Framework Policy, and regularly conducts briefings for government and the diplomatic corps. Jacqueline has been Visiting Fellow at UCLA, NYU, the Free University of Berlin and Konstanz University, and DAAD Guest Professor at the University of Cologne. She is the Founding Chair of the Asian Australian Studies Research Network and a member of the NYU Global Arts Exchange Program. She was awarded the Chevalier Ordre des Palmes Académiques in 2014.



Matthew Lord

Matthew Lord is an analyst at Aither, a policy, economics, and strategy consulting firm focusing on water and natural resource management. Matthew also works as a research assistant in the Fenner School of Environment and Society at ANU. He has a multidisciplinary academic background across Geography, Economics and International Relations. His research interests are sustainability governance and the politics of socio-technical transitions.



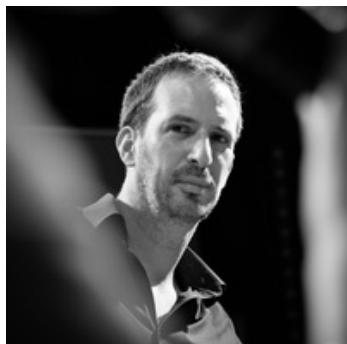
Prof Myriam Merad, Centre National de la Recherche Scientifique, Université Paris Dauphine

Prof Myriam Merad is CNRS Research Director at Nice and Paris Dauphine Universities. Interests include risks, resilience and sustainability in safety, security, environment and health, expertise framing, policy analytics and participative/deliberative decision analysis. She is the author of six books and co-author of several books. She has contributed to different national guidelines and legislations in the field of safety and sustainability; has written more than 100 papers in scientific journals (www.researchgate.net/) and in conferences, and has communicated in more than 80 conferences and seminars. She has contributed to organize more than 30 technical and scientific seminars, conferences and meetings. Merad is also active in many other risk-related institutes and societies: she was a member of the Scientific and Technical Committee of IRSTEA from 2009 to 2017, member of the scientific committee of AFPCN (French association for the prevention of natural catastrophes) and member of the Bureau IMdR (the French engineer association in risk, safety and reliability management), Councillor of the SRA (Society for Risk Analysis). She is also a member of the editorial board of Springer's *Environment, systems & Decisions* journal (formerly *The Environmentalist*).



Dr Ehsan Nabavi

Dr Ehsan Nabavi is a Research Fellow at the 3A Institute, and Research Associate at the ANU Centre for European Studies. He was previously a Research Fellow with the program on science, technology and society at the John F. Kennedy School of Government, Harvard University (2016–17). His research interests span three broad areas: water resources system sustainability and governance; science and technology studies; and conflict and security studies. In his PhD research he explored the connection between water conflict (formation, evolution, and transformation) and the ways 'sustainability' is imagined in different societies.



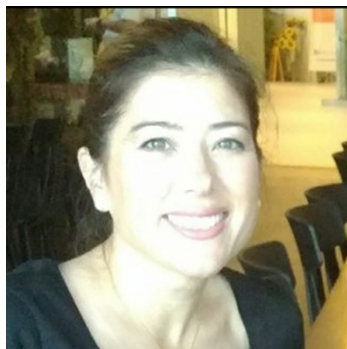
A/Prof Mathieu O'Neil

Mathieu O'Neil is Associate Professor in Communication at the University of Canberra's News & Media Research Centre and Adjunct Research Fellow in the School of Sociology at the Australian National University. His research is multidisciplinary, incorporating communication studies, the sociology of fields and controversies, social network analysis, and labour and organisation studies. He is the founder of the online *Journal of Peer Production*.



Dr Sarah Pearson

Dr Sarah Pearson is Australian Government Department of Foreign Affairs and Trade's inaugural Chief Scientist and Chief Innovation Officer. Sarah has had an eclectic career spanning industrial innovation, academia, management consulting, government, and science communication. Sarah is also a member of a number of boards, including the Global Innovation Fund, and recently inducted ATSE Fellow.



Delia Pembrey

In November 2018, the Department of Human Services launched the Augmented Intelligence Centre of Excellence (AI CoE) for Government by the Hon. Minister Michael Keenan to explore and address issues arising from the development and embedding of AI in the Public Sector. Delia is part of the DHS AI CoE research and cognitive services team establishing collaborative links with academia, industry, government and the community to develop beneficial solutions together and ensuring the 'human' is in the loop. Delia's specialities are critical systemic leadership, technology, critical systems thinking, Boundary dynamics and value judgements, and sociocybernetics.

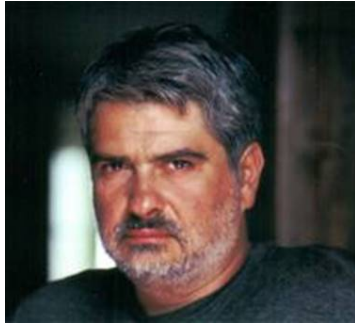


Mr Bertrand Pous, Counsellor for Culture, Education, Science and Technology, French Embassy in Canberra (Australia)

Mr. Bertrand Pous was born on the 25th March 1967 in Narbonne (France). He is married with three children. Graduated from Sciences Po Paris and Reims Business School, he made all of his career as a diplomat, in Embassies and at the French Ministry of Foreign Affairs (MFA). His postings were the following:

- 1994-1999: Advisor in the Economic & Financial Affairs Department (MFA)
- 1999 - 2001: Political advisor at the French Embassy in Ottawa (Canada)
- 2001-2005: Deputy Head of Mission at the French Embassy in Asuncion (Paraguay)
- 2005-2009: Political advisor in the Strategic Affairs & Security Division (MFA)
- 2009-2013: Head of the Economic regulation and international trade Department (MFA)
- 2013-2016: Counsellor for Culture, Science and Education and Director of the Institut Français de Singapour at the French Embassy in Singapore (Singapore)
- Since Sept 2016: Counsellor for Culture, Education, Science and Technology at the French Embassy in Canberra (Australia)

He is currently the Counsellor for Culture, Education, Science and Technology at the French Embassy in Canberra (Australia) which consists of promoting French-Australian relations in these fields, establishing partnerships and connections that create a durable French Australian relationship.



Prof Alexis Tsoukiàs, LAMSADE-CNRS, PSL

Alexis Tsoukiàs (Greece, 1959) is a CNRS research director at LAMSADE, PSL Research University, Université Paris Dauphine. He holds (1989) a PhD in Computer Science and Systems Engineering from the Technical University of Torino (Italy) where he also graduated engineering studies. His research interests include subjects such as: multiple criteria decision analysis, non conventional preference modelling, policy analytics, applied non classical logics, ordinal mathematical programming, artificial intelligence and decision theory. He is the co-author of two books and more than 80 journal articles and book contributions. He has been vice-president of ROADEF (the French OR society) as well as President of EURO (the European association of OR societies). In 2007 he was coordinator of the European COST Action IC0602, Algorithmic Decision Theory, funded within the FP7. He served the Research Administration in several positions, including the National Committee of the CNRS, the Scientific Council of INERIS and the Scientific Board of the National Institute of Computer Science of the CNRS. He was Director of the LAMSADE until 2018 and is national coordinator of the Policy Analytics Research Network (GDR 3270, www.gdr3270.fr). Besides teaching several post-graduate classes in Paris and world-wide, he is coordinator of the Peace Studies Master at Université Paris Dauphine. He occasionally practices decision support, mainly in the area of public policy. He has been invited to more than 30 Universities world-wide. Personal web page: <http://www.lamsade.dauphine.fr/~tsoukias>.



Assoc. Prof. Lorrae Van Kerkoff

Lorrae van Kerkhoff is an Associate Professor at the Fenner School of Environment and Society, where she convenes the Bachelor of Environment and Sustainability degree program, and teaches first, second and third year undergraduates, as well as supervising graduate students. She holds a PhD from ANU and was a post-doctoral fellow at the National Centre for Epidemiology and Population Health from 2003-2008, and spent 2004-5 with Harvard's Center for International Development, supported by a Fulbright Post-doctoral Fellowship and a Land and Water Australia Travelling Fellowship. While there she worked on the concept of knowledge systems for sustainability, and now focuses her research on knowledge governance and its relationship to social-ecological change. Her work brings together concepts from Science and Technology Studies with Sustainability Science. She has published extensively on integrative and transdisciplinary research concepts and methods, and recently on knowledge governance and 'future-oriented' approaches to conservation.



Dr Elizabeth Williams

Dr Elizabeth Williams is a Research Fellow at the 3A Institute at Australian National University (ANU). She completed her PhD in experimental nuclear structure at Yale University in December 2009, did postdoctoral work in fundamental and applied nuclear physics at Yale and CSIRO, and joined the ANU in 2012, where she held an ARC DECRA fellowship. She has created and used cyber-physical systems to carry out her research in nuclear science, and has always had a fascination with how complex systems come together in a human context. Her passion for research impact and the responsibilities that researchers have to imagine the context in which their research will be used led her to the 3A Institute, where she is currently working on creating a new applied science in the management of data, artificial intelligence, and cyber-physical systems. She is also a Fellow of the Higher Education Academy and an Honorary Senior Lecturer in the ANU Department of Nuclear Physics.



David Wainwright

David recently transitioned from 30+ years service in the regular Australian Army. He has a wealth of experiences in strategic and operational roles that directly link to policy. His privileged assignments include: Commander of the Australian Reconstruction Task Force Australian in Southern Afghanistan in 2007/8; through to his more recent operational role as the Chief of Operations on the US led Coalition HQ in Kabul in 2015/16. His other notable experiences include secondment to Department of Prime Minister and Cabinet, exchange assignment within UK Ministry of Defence, through to Director General Special Operations Capability. His most recent assignment in 2017/18 was the Director General Future Land Warfare responsible for Army's future plans and includes areas such as robotics and autonomous systems.



Dr Marta Yebra

Dr Marta Yebra is an international recognized Senior Scientist in the Fenner School of Environment and Society and the Institute for Space at The Australian National University. Her research focuses on using remote sensing data to monitor, quantify and forecast natural resources, natural hazards, and landscape function and health at local, regional and global scales. From 2004-2010 she was employed at the University of Alcalá (Spain), where she was involved in two large multidisciplinary projects which assessed and integrated the main fire risk factors and analysed fire risk trends, considering potential changes in socio-economic factors as well as foreseen impacts of global climate change. During her research, she spent time at the Centre for Spatial Technologies and Remote Sensing (University of California at Davis, USA); the National Institute of Agricultural Technology (INTA, Argentina) and the School of Environmental and Life Sciences of Salford (UK). From 2010 to 2013 Dr Yebra was a postdoctoral fellow at CSIRO Land and Water as developing innovative methods to integrate satellite and in-situ observations from micrometeorological tower sites with models to predict carbon-water coupling. In 2017, Dr Yebra was

awarded the prestigious Max Day Environmental Science Fellowship from the Australian Academy of Science. She was also awarded the CSIRO Pyne-Scott Career Award in 2013. She serves as an Associate editor for Remote Sensing of Environment.



Ms Fateme Zare

Fateme is a PhD scholar in iCAM at the Fenner School of Environment and Society. Her research interests mainly span Water resources management, System Dynamics, Decision and policy making and Uncertainty. Fateme has received her Master of Science in Water Resources Engineering from Tarbiat Modares University (Tehran, Iran). She has 6 years' experience in environment and water management projects in Iran. Upon receiving an Endeavour Postgraduate Scholarship from the Ministry of Tourism and International Education, she started her PhD in 2016 doing a research on the application of integrated modelling for decision-making process under deep uncertainty. Her case study is investigating opportunities for water management in the Campaspe catchment, contributing to the research partnership between MDBA and NCGRT.

CONTACT US

For questions of logistics or program content, please contact:

A/Prof Katherine Daniell

Research Lead

3A Institute, College of Engineering and Computer Science

The Australian National University

Acton ACT 2601

AUSTRALIA

M: +61 419 848 256

E: katherine.daniell@anu.edu.au

Dr Joseph Guillaume

ARC DECRA Research Fellow

Fenner School of Environment and Society

The Australian National University

Acton ACT 2601

AUSTRALIA

M: +61 403 444 976

E: joseph.guillaume@anu.edu.au

Matthew Lord

Research Officer

Fenner School of Environment and Society

The Australian National University

Canberra ACT 0200

AUSTRALIA

E: matthew.lord@anu.edu.au