



Australian  
National  
University

JEAN MONNET  
EUROPA POLICY LAB

# Which Degree of Integration Between Science and Public Policy? Food Safety in France

**Wednesday 3 April 2019, 11.30 – 1pm**

## Speaker

### Professor Myriam Merad

Research Director, National  
Center for Scientific Research  
(CNRS), France

Promoted as a guarantee of neutrality and rigour, the dissociation between the risk assessment and risk management phases has an impact on the effectiveness of risk and safety public policies. It is certainly necessary to distinguish in their roles and functions the actors allocated to these two phases. However, it would be a misconception to believe that the questions of expertise are neutral and have no impact on risk assessment, management and governance.

## Location

### The Nye Hughes Room

ANU Centre for European Studies  
The Australian National University  
Building #67C, 1 Liversidge Street  
Acton ACT 2601

Professor Merad will discuss integration between science and public policy on the example of food safety regulations in France.

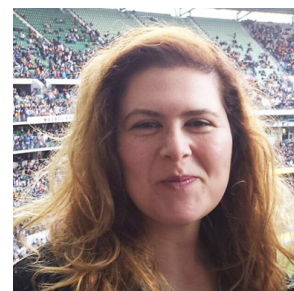
## Map reference

[http://www.anu.edu.au/  
maps#show=29321](http://www.anu.edu.au/maps#show=29321)

## Registration required

[https://myriam\\_merad\\_april2019.  
eventbrite.com.au](https://myriam_merad_april2019.eventbrite.com.au)

**Professor Myriam Merad** is a CNRS Research Director at UMR LAMSADE, Dauphine University, France. She leads research in risk governance and decisions in safety, security, health and environment. Professor Merad is primarily interested in expertise framing, policy analytics and participative/deliberative decision analysis. She is the author of six books in French on decision aiding, expertise and risk assessment and management; concertation and mediation in environment; and managing the organisational change of sustainable development, as well as three upcoming books in English and French. Professor Merad has contributed to different national guidelines and legislations in the field of safety and sustainability. She has written more than 50 papers for scientific journals and conferences, and has participated in 80 conferences and seminars. Furthermore she has co-organised more than 30 technical and scientific seminars, conferences and meetings.



## Presented by



Co-funded by the  
Erasmus+ Programme  
of the European Union



Australian  
National  
University



ANU CENTRE FOR EUROPEAN STUDIES

ANU College of  
Arts & Social Sciences

**The ANU Centre for European Studies (ANUCES)** is the oldest research centre in Australia focused on the study of Europe and the European Union. It is an ANU-wide platform for research and collaboration with Europe, with strong links to government and industry. ANUCES focuses the talents of hundreds of researchers, teachers and students on a single site, and proudly promotes interdisciplinary dialogue. It delivers research, education and outreach with the support of the Erasmus+ Programme of the European Union.

T 02 6125 9896 W <http://ces.anu.edu.au> E [europe@anu.edu.au](mailto:europe@anu.edu.au)